



**NIPPON  
PAINT**

# COLOUR MY WORLD

2018



# STEP ONE

# CHOOSE YOUR PAINT

**MOST  
POPULAR**



**MOST  
PREMIUM**



**ANTI-  
BACTERIAL**



## ODOUR~LESS ALL-IN-1

**Almost No Paint Odour  
During And After Painting**

- ✓ Almost No Paint Odour
- ✓ Anti-Bacterial
- ✓ Covers Hairline Cracks
- ✓ Washable
- ✓ Near Zero VOC

## ODOUR~LESS EASYWASH

**All The Benefits of Odour~less All-In-1  
With Added Superior Washability**

- ✓ Almost No Paint Odour
- ✓ Excellent Coverage and Hiding Power
- ✓ Near Zero VOC

Teflon® is a trademark of DuPont™  
and is used under license by  
Nippon Paint (Singapore) Co. Pte Ltd

## ODOUR~LESS MEDIFRESH

**Anti-Bacterial Protection  
Virtually No Paint Odour**

- ✓ Anti-Bacterial Formula
- ✓ Up to 5 Years Protection
- ✓ Washable
- ✓ Near Zero VOC





# SELECTION OF INTERIOR PAINT

ANTI-MOSQUITO



WASHABLE



MOST ECONOMICAL



## MOZZIEGUARD

### Against Aedes Aegypti Mosquitoes

- ✓ Repels and Knocks Down Mosquitoes
- ✓ DEET-Free Formulation
- ✓ Low Odour
- ✓ SGBC Certified Green Product
- ✓ Registered with NEA

MozzieGuard is only available in Base 1 & Base 2 colours

## EASY WASH WITH TEFLON®

### Premium Washable Paint

- ✓ Repels Stains and Blocks Dirt
- ✓ Low Odour
- ✓ Covers Hairline Cracks
- ✓ Resists Fungus Growth

Teflon® is a trademark of DuPont™  
and is used under license by  
Nippon Paint (Singapore) Co. Pte Ltd

## VINILEX 5000

### Most Economical Paint

- ✓ Low Odour
- ✓ Excellent Coverage
- ✓ Resists Fungus Growth



Also available in White 1142

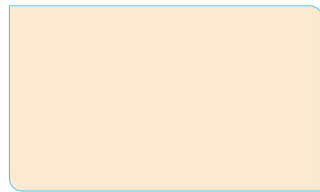
			
① Violet Whisper <b>NP OW1085P</b>	① Sail White <b>1199</b>	① Sneaker White <b>3173</b>	① Whispering White <b>NP OW1001P</b>
			
① Light Wings <b>NP OW1005P</b>	① Snow Flakes <b>1164</b>	① Bare Toes <b>NP OW1025P</b>	① Pearl <b>1152</b>
			
① White Lace <b>NP OW1004P</b>	① Stove White <b>3172</b>	① Rosepetal <b>5083</b>	① Apple White <b>1140</b>
			
① Angelic Pink <b>NP OW1029P</b>	① Sky Beige <b>1101</b>	① White Dawn <b>1153</b>	① Lily White <b>1137</b>
			
① Timid Pink <b>NP OW1026P</b>	① Lilac White <b>1138</b>	① Gossamer White <b>NP OW1015P</b>	① Swan Wing <b>NP OW1017P</b>
			
① Snow White <b>NP OW1002P</b>	① Orchid White <b>1139</b>	① Chalk White <b>1135</b>	① Dreamland <b>1149</b>
			
① Mobe Pearl <b>NP OW1008P</b>	① Soft Flutter <b>NP OW1006P</b>	① Rose White <b>1143</b>	① Creamy White <b>5062</b>
			
① Swanlike <b>NP OW1021P</b>	① Ultra Smooth <b>NP OW1020P</b>	① Cotton Bud <b>NP OW1018P</b>	① Barley White <b>1141</b>



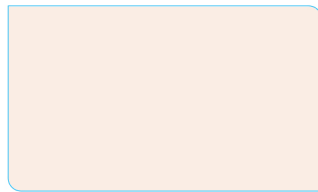
# Yellows & Oranges

			
① Sun Glint <b>NP OW1013P</b>	① Silent Bliss <b>NP YO1166P</b>	① Daisy White <b>NP OW1014P</b>	① Pink Puff <b>NP OW1028P</b>
			
① Ixora <b>NP YO1095P</b>	① Silky Veil <b>NP YO1137P</b>	① Yellow Tulip <b>NP YO1089P</b>	① Sheer Chiffon <b>NP YO1167P</b>
			
① Slight Embrace <b>NP YO1103P</b>	① Young Banana <b>NP YO1159P</b>	① Lemon Yellow <b>NP YO1090P</b>	① Gold Dust <b>NP YO1146P</b>
			
① Softly Lit <b>NP YO1138P</b>	① Morning Dawn <b>NP YO1139P</b>	① Yellow Pinafore <b>NP YO1153P</b>	② Apricot Flower <b>NP YO1199T</b>
			
② Potentilla <b>NP YO1108T</b>	② Perk Me Up <b>NP YO1161T</b>	③ Zing <b>8117</b>	② Apricot Buds <b>NP YO1217T</b>
			
② Glory Yellow <b>NP YO1129T</b>	③ Golden Dome <b>NP YO1149D</b>	③ Golden Charmer <b>NP YO1191D</b>	③ Tribal Art <b>NP YO1226D</b>
			
Y Sunlight <b>1190</b>	③ Field Daisy <b>NP YO1184D</b>	③ Orange Bedder <b>NP YO1198D</b>	Y Disco Beat <b>NP YO1211A</b>
			
Y Circus Top <b>NP YO1134A</b>	Y Leap of Faith <b>NP YO1190A</b>	Y Orange Torch <b>NP YO1204A</b>	④ Party Time <b>NP YO1225A</b>

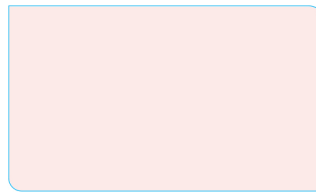
# Pinks & Reds



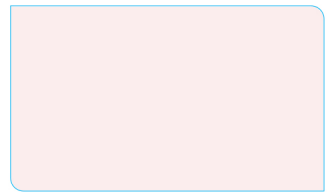
① Porcelain 1154



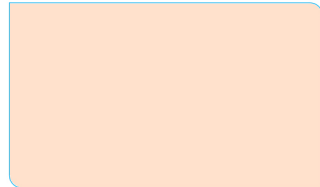
① Sugar Pink NP OW1033P



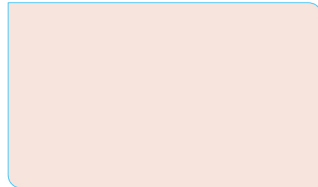
① Sweet Wreath NP OW1041P



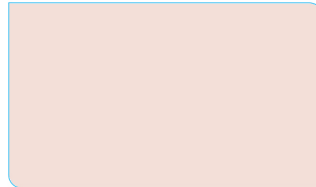
① Restful NP OW1042P



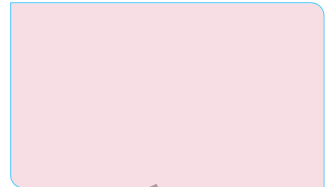
① Little Cupcakes NP YO1222P



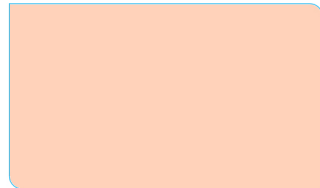
① Snowbush Rose NP OW1039P



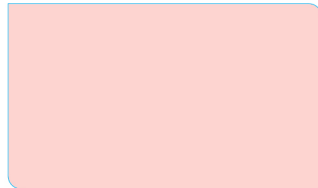
① Felicia Rose NP OW1040P



① Sweet Deal NP R1306P



① Soft Cushion NP YO1223P



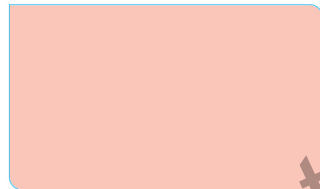
① Gypsy Song NP R1272P



① Blusher NP R1292P



① Too Shy NP R1313P



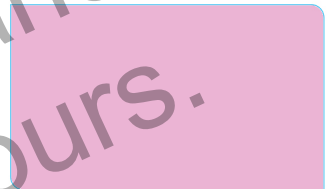
① Spring Song NP R1258P



① Candy Shoppe NP R1276P



① Sweet Dreams NP R1257P



① Pink Berret NP R1311P



② Just Divine NP R1259T



② Strawberry Ice NP R1266T



① Sweethearts NP R1293P



② Pink Rally NP R1304T



③ Fire Princess NP R1268D



③ Coral Expression NP R1275D



② Bubblegum Pink NP R1294T



③ Love 8115



④ Talk Of The Town NP AC2070A



④ Knockout Red NP R1281A



② Mauve Pink 1182



④ Pizazz NP AC2081A



④ Fashion Red NP R1274A



④ Red Earth 3168



④ Fascination NP R1295A



④ Raging Pink NP R1302A



# Purples

			
① Angel Pink <b>1162</b>	① Drifting Cloud <b>NP OW1035P</b>	① Josette <b>NP OW1044P</b>	① Velvet Touch <b>NP OW1051P</b>
			
① Light Laurels <b>NP OW1043P</b>	① Penelope Pink <b>NP OW1038P</b>	① Indigo Mist <b>1129</b>	① Early Bird <b>NP PB 1446P</b>
			
① Home Sweet Home <b>NP R1271P</b>	① Orchid Reach <b>NP N1942P</b>	① Snowbell <b>NP PB1425P</b>	① Royal Mist <b>NP PB1474P</b>
			
① Iris Pink <b>NP R1327P</b>	① Twirling Ribbon <b>NP PB1426P</b>	① Pale Pansy <b>NP PB1411P</b>	① Dear Diary <b>NP PB1475P</b>
			
① Cocktail <b>NP R1314P</b>	① Chata Phlox <b>NP PB1398P</b>	① Light Cadence <b>NP PB1440P</b>	② Lady Di <b>NP PB1476T</b>
			
② Fairy Lights <b>NP R1339T</b>	③ Pure Addiction <b>NP PB1420D</b>	① Millenia <b>NP PB1444P</b>	② Nigara Nights <b>NP PB1486T</b>
			
② Pink Bouquet <b>NP R1332T</b>	④ Harmonious Purple <b>1175</b>	③ Harvest Dance <b>NP PB1443D</b>	③ Blue Triumph <b>NP PB1485D</b>
			
③ Rose Velvet <b>NP R1338D</b>	④ Iris Bouquet <b>NP PB1400A</b>	④ Sultan Blue <b>NP PB1456A</b>	④ Deep Trance <b>NP PB1477A</b>

# Blues

			
① Baby Breath <b>1163</b>	① Soft Tendrils <b>NP OW1055P</b>	① Soft Creek <b>NP OW1062P</b>	① Blue Trace <b>NP OW1059P</b>
			
① Lingering Blue <b>NP PB1523P</b>	① Laid Back <b>NP OW1056P</b>	① Sprizzle <b>NP OW1060P</b>	① Clear Water <b>1124</b>
			
① Lite Up <b>NP PB1544P</b>	① Yours Truly <b>NP PB1530P</b>	① Winning Streak <b>NP BGG1566P</b>	① Blue Instinct <b>NP BGG1571P</b>
			
① Blue Tune <b>NP PB1545P</b>	① Blue Lullaby <b>NP PB1550P</b>	② Jewel Blue <b>1197</b>	① Blue Jive <b>NP BGG1573P</b>
			
② Blue Monday <b>NP PB1549T</b>	② Barbara Blue <b>NP PB1525T</b>	② Cerulean <b>NP PB1535T</b>	① Seabreeze <b>1126</b>
			
② Blue Spell <b>NP BGG1570T</b>	③ Founder Blue <b>NP PB1527D</b>	③ True Blue <b>NP PB1534D</b>	① Basic Blue <b>NP BGG1580P</b>
			
③ Nautical Blue <b>NP PB1548D</b>	④ Liberty Blue <b>NP PB1533A</b>	④ Porcelain Blue <b>NP PB1526A</b>	③ Ocean Calm <b>NP BGG1583D</b>
			
④ Ultra Blue <b>NP PB1547A</b>	④ Tremont Blue <b>NP PB1519A</b>	④ Cosmic Navy <b>3133</b>	④ Navajo Turquoise <b>NP BGG1589A</b>



# Greens

			
① Gardenia <b>NP OW1077P</b>	① Chill <b>1118</b>	① Green Whimsey <b>NP OW1074P</b>	① Green Pass <b>NP OW1073P</b>
			
① Clear Day <b>NP OW1072P</b>	① Slight Wift <b>NP OW1069P</b>	① Clover Tip <b>NP BGG1774P</b>	① Clover Petal <b>NP OW1075P</b>
			
① Blue Swirl <b>NP OW1068P</b>	① Green Dash <b>NP BGG1789P</b>	① Calm Spirit <b>NP BGG1670P</b>	① Sheer Green <b>NP BGG1677P</b>
			
① Pool Party <b>NP BGG1600P</b>	① Green Slur <b>NP BGG1622P</b>	② Sprout <b>1122</b>	② Spiny Green <b>NP BGG1689T</b>
			
① Green Rhythm <b>NP BGG1606P</b>	② Restful Green <b>NP BGG1626T</b>	② Green Treat <b>NP BGG1664T</b>	Y Acid Lime <b>NP BGG1687A</b>
			
② Lush <b>NP BGG1605T</b>	③ Gazing Fields <b>NP BGG1616D</b>	Y Green Tuft <b>NP BGG1666A</b>	Y Lime Time <b>NP BGG1673A</b>
			
① Aqua Marine <b>5086</b>	④ Green Barricades <b>NP BGG1617A</b>	③ Painter's Leaf <b>NP BGG1786D</b>	Y Patchwork <b>NP BGG1722A</b>
			
④ High Trek <b>NP BGG1596A</b>	④ Ultra Green <b>NP BGG1610A</b>	Y Climbing Vine <b>NP BGG1785A</b>	④ Esparina <b>NP BGG1750A</b>

# Browns

			
① Soft Tissue <b>NP OW1011P</b>	① Bare Blush <b>NP OW1023P</b>	① Peaceful White <b>NP OW1009P</b>	① Cotton White <b>1136</b>
			
① Soft Pulp <b>NP OW1019P</b>	① Victorian White <b>NP OW1024P</b>	① Ash White <b>NP OW1082P</b>	① Peach Pinch <b>NP OW1022P</b>
			
① Wispy Bits <b>NP N1859P</b>	① Old Pub <b>NP N1866P</b>	① Intimate White <b>NP OW1007P</b>	① Autumn White <b>NP OW1027P</b>
			
① Wall Arte <b>NP N1865P</b>	① Natural Cane <b>8167</b>	① Birch Patina <b>NP N1852P</b>	① Rose Fragrance <b>NP OW1031P</b>
			
① Light McIntosh <b>NP N1860P</b>	① Tavern Buff <b>NP N1867P</b>	① Foggy Day <b>NP N1858P</b>	① Shitake <b>NP N1873P</b>
			
② Artist's Impression <b>NP N1864T</b>	② Stairstep <b>NP N1868T</b>	② Shipsgate <b>NP N1857T</b>	② Soft Fur <b>NP N1874T</b>
			
③ Morsels <b>NP N1863D</b>	③ Oak Parquet <b>NP N1870D</b>	③ Tracking Tan <b>NP N1854D</b>	② Wet Moccasin <b>NP R1385T</b>
			
④ Azuki Coffee <b>NP N1862A</b>	④ Friar Tuck <b>NP N1869A</b>	④ Timber Logs <b>NP N1855A</b>	④ Sable Brown <b>NP N1876A</b>



# Browns

			
① Cloud Formation <b>NP N1971P</b>	① White Peony <b>NP OW1034P</b>	① Special Touch <b>NP OW1049P</b>	① Evening Breeze <b>NP OW1079P</b>
			
① Wisteria White <b>NP OW1046P</b>	① Soft Marion <b>NP OW1045P</b>	① White Lilac <b>NP OW1050P</b>	① Light Gauze <b>NP OW1078P</b>
			
① Nature Walk <b>NP N1880P</b>	① Orchid Scent <b>NP OW1047P</b>	① Enticed <b>NP N1929P</b>	① Pebble Walk <b>NP N1817P</b>
			
② Leather Belt <b>NP N1881T</b>	① Bradford Beige <b>NP N1887P</b>	① Kind Words <b>NP N1935P</b>	① Natural Almond <b>NP N1823P</b>
			
② Mushroom Brown <b>NP N1882T</b>	① Frontier Shadow <b>NP N1892P</b>	② Soft Chant <b>NP N1930T</b>	② Wood Box <b>NP N1822T</b>
			
③ Old Boots <b>NP N1884D</b>	② Ground Clove <b>NP N1897T</b>	② Long Finale <b>NP N1931T</b>	③ Green Gallop <b>NP N1828D</b>
			
③ Nat King Cole <b>NP N1911D</b>	③ Roxbury Brown <b>NP N1891D</b>	③ Pitter Patter <b>NP N1933D</b>	③ Crete Barrel <b>NP N1821D</b>
			
④ Painted Frame <b>NP N1904A</b>	④ Newtowne Brown <b>NP N1890A</b>	④ Rumours <b>NP N1932A</b>	④ Old Box <b>NP N1820A</b>

Also available in Black 5047



# Accent Colours

			
Y Shocking Yellow <b>NP AC2049A</b>	Y Jester Yellow <b>NP AC2050A</b>	Y Yellow Blaze <b>NP AC2053A</b>	Y Deep Marigolds <b>NP AC2054A</b>
			
4 Orange Bouquet <b>NP AC2062A</b>	Y So Orange <b>NP AC2064A</b>	Y Ripe Tomatoes <b>NP AC2067A</b>	Y Exciting Orange <b>NP AC2068A</b>
			
4 Hot Shot <b>NP AC2069A</b>	4 Cotillion Red <b>NP AC2071A</b>	4 Red Apples <b>NP AC2075A</b>	4 Alpha Red <b>NP AC2072A</b>
			
4 Fast Car <b>NP AC2076A</b>	4 Pink Floss <b>NP AC2080A</b>	4 Vivid Violet <b>NP AC2082A</b>	4 Irish Charm <b>NP AC2079A</b>
			
4 Marmalade Rush <b>NP AC2085A</b>	4 Purple Charm <b>NP AC2090A</b>	4 Rhapsody <b>NP AC2094A</b>	4 Deep Faith <b>NP AC2093A</b>
			
4 Blue Lighting <b>NP AC2098A</b>	4 Blue Mercury <b>NP AC2099A</b>	4 Fluid Blue <b>NP AC2101A</b>	4 Cobalt Blue <b>NP AC2100A</b>
			
4 Colleen Green <b>NP AC2116A</b>	4 Faraway <b>NP AC2111A</b>	4 Greek Legend <b>NP AC2113A</b>	4 Impressions <b>NP AC2114A</b>
			
4 Caramel Twirl <b>NP AC2140A</b>	4 Fortune Cookie <b>NP AC2133A</b>	4 Affogato <b>NP AC2134A</b>	4 Natural Highlights <b>NP AC2136A</b>

# design TRENDS

## Beinspired

Your home is a manifestation of your style, taste and character. Which of these themes best represent you?



## Modern Minimalist

When a lot less is more. The fundamental principles of minimalism are sharp lines, solid surfaces, low furniture, and pastel shades. Tonal colours such as whites and grays embrace the simplicity of the home.

A bright feature colour such as red is the most popular choice for highlighting details on a white background giving a modern and funky look. Minimalism is especially popular among businessmen and creative people who value the combination of simplicity, sophistication, beauty and practicality.



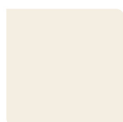
Kindly refer to page 4 to 13 for the actual colour chip.



## Industrial

To achieve an Industrial design, one needs to create an illusion of rough surfaces and materials that suggest an industrial past. The simplest way to show roughness is to leave some walls or surfaces unfinished.

Warm, neutral tones of gray paint work well when mixed with white to add a crisp, clean look. One can also add weathered wood, exposed brick, industrial lighting fixtures and concrete to complete that "unfinished look". Done right, the industrial look can range from the raw and edgy to the chic and modern.



Violet Whisper  
NP OW1085P



Smoking Gray  
NP N2045T



Impressions  
NP AC2114A



Black Magic  
NP N1988A

Kindly refer to page 4 to 13 for the actual colour chip.



Image courtesy of DISTINCTiDENTITY PTE LTD



Image courtesy of Deizgn Culture



Image courtesy of D5 Studio Image Pte Ltd



Image courtesy of Weiken.com ID Pte Ltd

## Zen

The interior design of a Zen theme is always expressed in an uncluttered, natural and clean manner exuding a fresh, relaxing and calming feel which can instantly uplift one's mood.

Neutral colours related to the elements such as earth, wood and stone are often used on walls while a red lacquered table in the entrance, a vibrant purple floor cushion on the sofa or a bronze coloured lamp over the dining table can energize the room.



Gossamer White  
NP OW1015P



Autumn White  
NP OW1027P



Lime Time  
NP BGG1673A



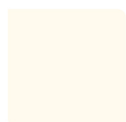
Oak Parquet  
NP N1870D

Kindly refer to page 4 to 13 for the actual colour chip.



## Scandinavian

The key principle of the Scandinavian style is prioritising function without sacrificing aesthetic. Characteristics of this style are simple functional shapes, light coloured wood, simplistic decor, focus on natural lighting and warm colours and nuances, which compensate the lack of warmth and light in the harsh Northern climate. To bring more character into your space, add an eye-catching centrepiece to reflect your personality.



Snow Flakes  
1164



Swansdown  
5075



Gray Cloth  
NP N1979P



Mysterious  
8151

Kindly refer to page 4 to 13 for the actual colour chip.



Image courtesy of Design Profession Pte Ltd

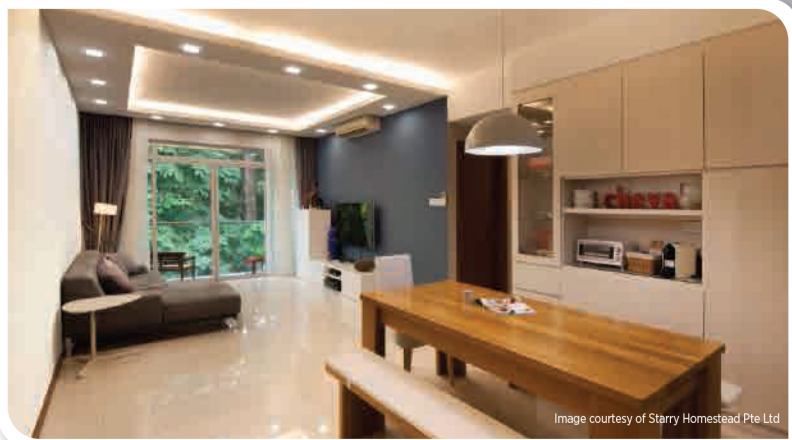


Image courtesy of Starry Homestead Pte Ltd



Image courtesy of Weiken.com ID Pte Ltd



Image courtesy of Weiken.com ID Pte Ltd

## Modern Rustic

It is all about striking a balance between the new and the old. To achieve a modern rustic look, go big on textures and wood elements while maximizing your space with clean lines and quirky furniture. The combination creates a charm that appeals in this era of slick technology and manufactured materials. The colour palette recommended are forest greens, denim blues, vintage khaki, and deep reds.



Swan Wing  
NP OW1017P



Gray Dew  
NP OW1086P



Crater Black  
NP N2030A



Painted Frame  
NP N1904A

Kindly refer to page 4 to 13 for the actual colour chip.





## Eclectic

The Eclectic style does not follow any one system, but is a mixture of time periods, styles and colors. To bring out the best of Eclectic decorating, try contrasting vintage and modern, serious and playful. It provides a dynamic canvas to suit your evolving preferences.



Clear Water  
1124



Sunlight  
1190



Bubblegum Pink  
NP R1294T



Hardware Gray  
NP N2031D

Kindly refer to page 4 to 13 for the actual colour chip.



Image courtesy of Luova Projects Services



Image courtesy of Meter Cube Interior Pte Ltd



## UrbanModern

Urban modern design is all about Cosmopolitan living and is a 'modern' update to the industrial design. It strives to be a haven for city dweller to recharge and has a soft industrial aesthetic that is trendy and stylish.



Image courtesy of DISTINCTiDENTITY PTE LTD



Genteel  
NP OW1088P



Azuki Coffee  
NP N1862A



Sable Brown  
NP N1876A



Green Barricades  
NP BGG1617A

Kindly refer to page 4 to 13 for the actual colour chip.

# zingy **YELLOW**

Energetic, Passionate and Active



Image courtesy of In2Space Interior Pte Ltd. Lighting of the room can influence the appearance of the final colour. Kindly refer to page 5 for the actual colour chip.



Image courtesy of Vegas Interior Design Pte Ltd. Lighting of the room can influence the appearance of the final colour. Kindly refer to page 5 for the actual colour chip.



To create a cozy and cheerful mood, use Glory Yellow NP YO1129T. (refer to page 5) Having yellow in the house will make the space feel more expansive and welcoming.

- All colours shown are as close to actual Nippon Paint colours as modern printing techniques permit.
- Colours shown in all images may vary from actual Nippon Paint colours due to lighting in photographs and printing.
- All colours shown are for reference only. Please always refer to the actual colour chips in pages 4 to 13 for your colour selection.





Orange spurs appetites and encourages conversations, hence it is recommended for use in living rooms and dining areas.



①

Yellow Blaze  
NP AC2053A

Image courtesy of Carpenters.com.sg. Lighting of the room can influence the appearance of the final colour. Kindly refer to page 13 for the actual colour chip.



①

Sunlight  
1190

Image courtesy of Dsign Station Pte Ltd. Lighting of the room can influence the appearance of the final colour. Kindly refer to page 5 for the actual colour chip.

vibrant

# ORANGE

Warm, Inviting and Stimulating

- All colours shown are as close to actual Nippon Paint colours as modern printing techniques permit.
- Colours shown in all images may vary from actual Nippon Paint colours due to lighting in photographs and printing.
- All colours shown are for reference only. Please always refer to the actual colour chips in pages 4 to 13 for your colour selection.

# sexy **RED**

Confident, Exciting and Charming

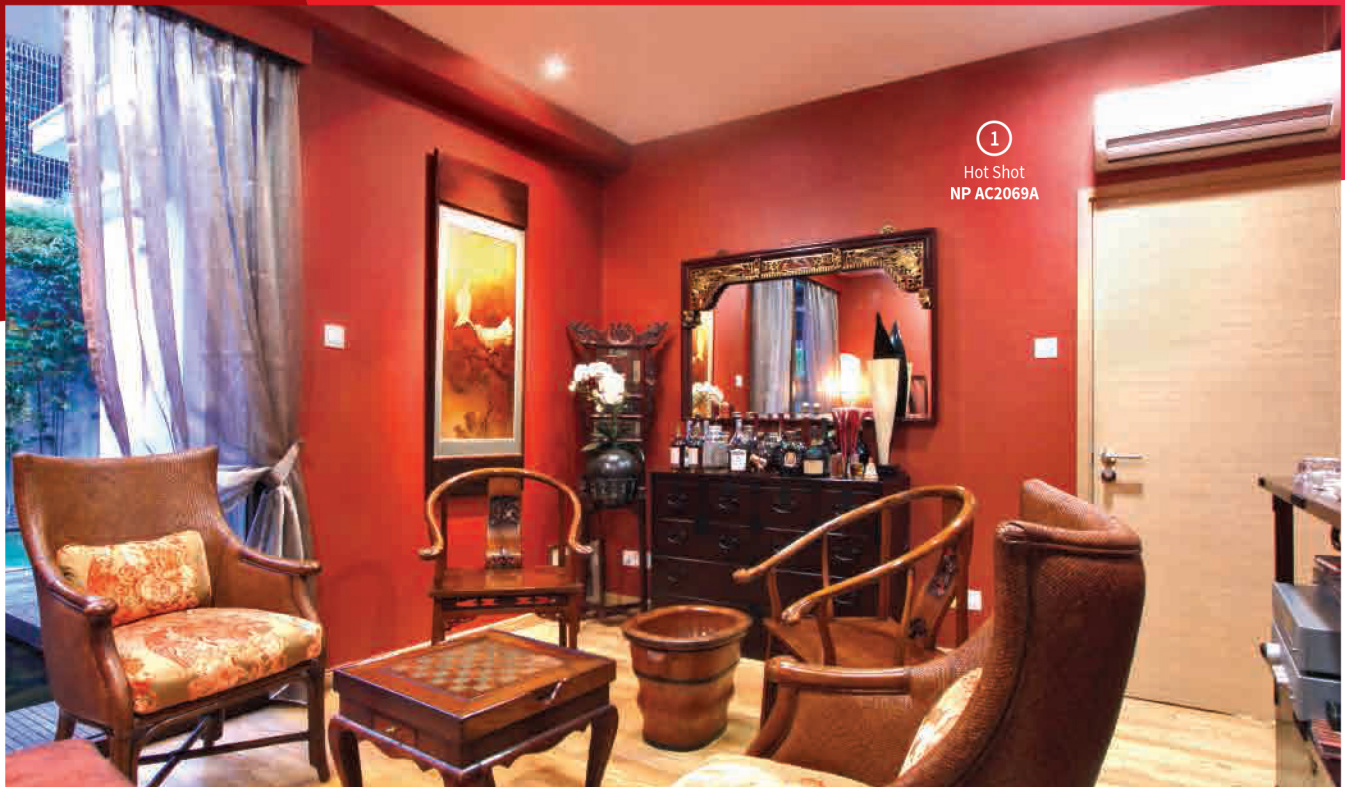


Image courtesy of Designscape Pte Ltd. Lighting of the room can influence the appearance of the final colour. Kindly refer to page 13 for the actual colour chip.



Lighting of the room can influence the appearance of the final colour. Kindly refer to page 12 and 13 for the actual colour chip.



Red is often associated with love, energy and excitement. Having a piece of red wall in your home raises the energy level, it is a good choice when you want to stir up excitement as well as stimulate conversations with your loved ones.

- All colours shown are as close to actual Nippon Paint colours as modern printing techniques permit.
- Colours shown in all images may vary from actual Nippon Paint colours due to lighting in photographs and printing.
- All colours shown are for reference only. Please always refer to the actual colour chips in pages 4 to 13 for your colour selection.





Pink has a playful yet calming effect. Try the Blusher NP R1292P (refer to page 6) and watch it transform your room into a fun intimate space.



Image courtesy of Ace Space Design Pte Ltd. Lighting of the room can influence the appearance of the final colour. Kindly refer to page 6 for the actual colour chip.



Image courtesy of Love Home Interior Design Pte Ltd. Lighting of the room can influence the appearance of the final colour. Kindly refer to page 6 for the actual colour chip.

romantic

**PINK**

Romantic, Calming  
and Compassionate

- All colours shown are as close to actual Nippon Paint colours as modern printing techniques permit.
- Colours shown in all images may vary from actual Nippon Paint colours due to lighting in photographs and printing.
- All colours shown are for reference only. Please always refer to the actual colour chips in pages 4 to 13 for your colour selection.

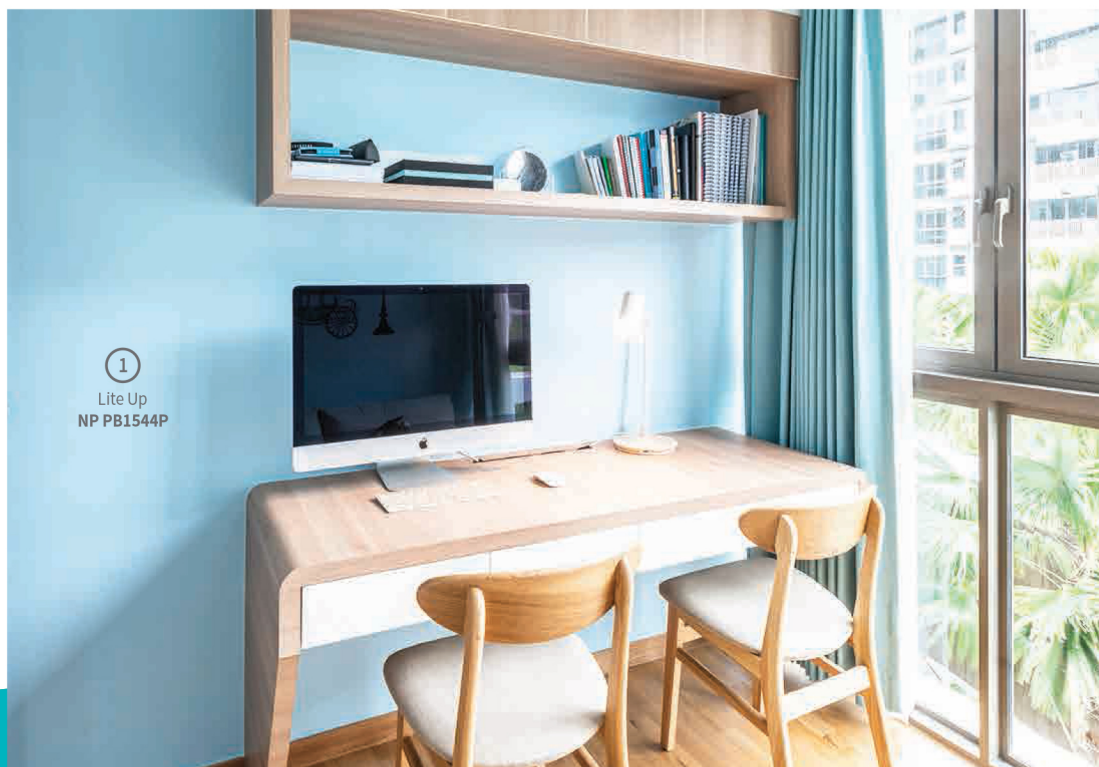
# tranquil **BLUE**

Cool, Serene and Productive



①  
Ocean Calm  
NP BGG1583D

Image courtesy of Starry Homestead Pte Ltd. Lighting of the room can influence the appearance of the final colour. Kindly refer to page 8 for the actual colour chip.



①  
Lite Up  
NP PB1544P

Image courtesy of Starry Homestead Pte Ltd. Lighting of the room can influence the appearance of the final colour. Kindly refer to page 8 for the actual colour chip.



If you are inspired by the beauty of water and sky, introduce turquoise colour into your spaces for a refreshing look that rivals the beach and ocean.

- All colours shown are as close to actual Nippon Paint colours as modern printing techniques permit.
- Colours shown in all images may vary from actual Nippon Paint colours due to lighting in photographs and printing.
- All colours shown are for reference only. Please always refer to the actual colour chips in pages 4 to 13 for your colour selection.





To make a small room appear larger, consider painting a cool colour such as green. Cool colours look as though they recede, making a room appear larger than it really is!

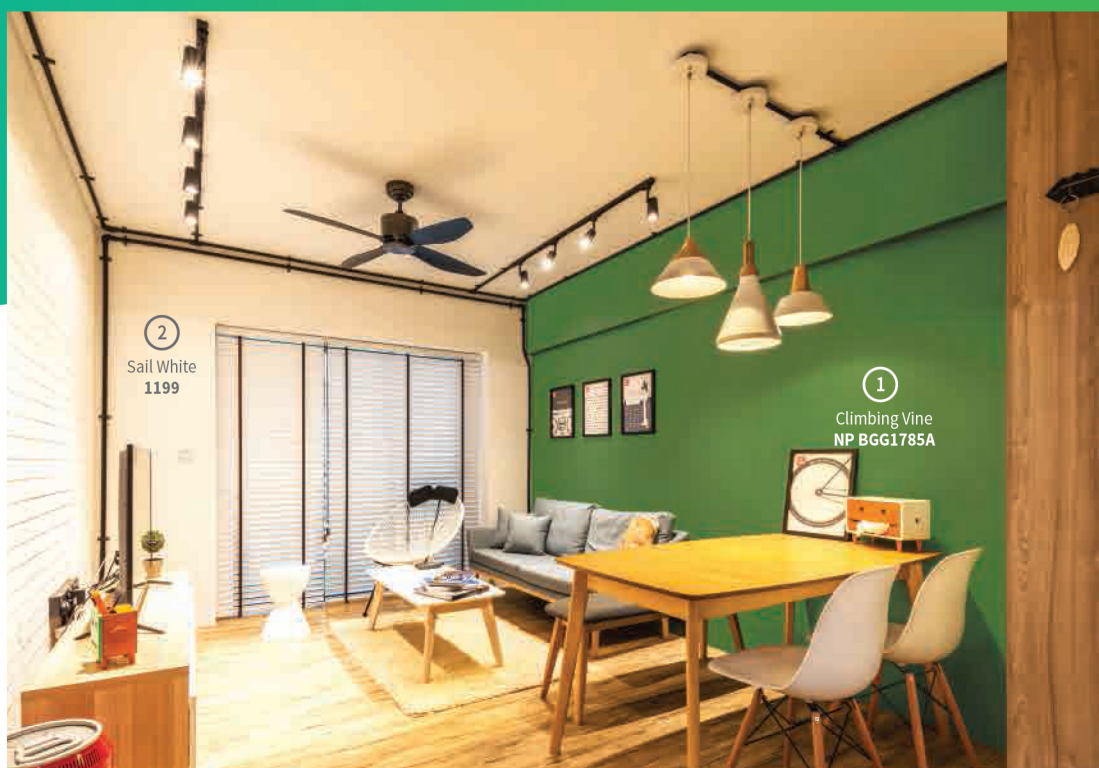


Image courtesy of Voila Design Pte Ltd. Lighting of the room can influence the appearance of the final colour. Kindly refer to page 4 and 9 for the actual colour chip.



Image courtesy of U-Home Interior Design Pte Ltd. Lighting of the room can influence the appearance of the final colour. Kindly refer to page 9 for the actual colour chip.

lush

**GREEN**

Natural, Balance and Harmonic

- All colours shown are as close to actual Nippon Paint colours as modern printing techniques permit.
- Colours shown in all images may vary from actual Nippon Paint colours due to lighting in photographs and printing.
- All colours shown are for reference only. Please always refer to the actual colour chips in pages 4 to 13 for your colour selection.

# royal **PURPLE**

Royal, Powerful and Luxurious



Image courtesy of Vegas Interior Design Pte Ltd. Lighting of the room can influence the appearance of the final colour. Kindly refer to page 6 and 13 for the actual colour chip.



Image courtesy of Carpenters.com.sg. Lighting of the room can influence the appearance of the final colour. Kindly refer to page 7 for the actual colour chip.



To avoid pungent paint odours, use Odourless All-in-1, as it has almost zero VOC pollutants. This makes it a healthier paint option to go for.

- All colours shown are as close to actual Nippon Paint colours as modern printing techniques permit.
- Colours shown in all images may vary from actual Nippon Paint colours due to lighting in photographs and printing.
- All colours shown are for reference only. Please always refer to the actual colour chips in pages 4 to 13 for your colour selection.





To create a cozy, luxurious and romantic bedroom ambience, try introducing deep rich purples such as Harmonious Purple 1175. (refer to page 7)



①  
Harmonious Purple  
1175

Image courtesy of D5 Studio Image Pte Ltd. Lighting of the room can influence the appearance of the final colour. Kindly refer to page 7 for the actual colour chip.



②  
Baby Breath  
1163

①  
Early Bird  
NP PB1446P

Lighting of the room can influence the appearance of the final colour. Kindly refer to page 7 and 8 for the actual colour chip.



# warm **BROWN**

Steadfast, Friendly and Dependable



Image courtesy of Amazon Interior Design. Lighting of the room can influence the appearance of the final colour. Kindly refer to page 5 and 13 for the actual colour chip.

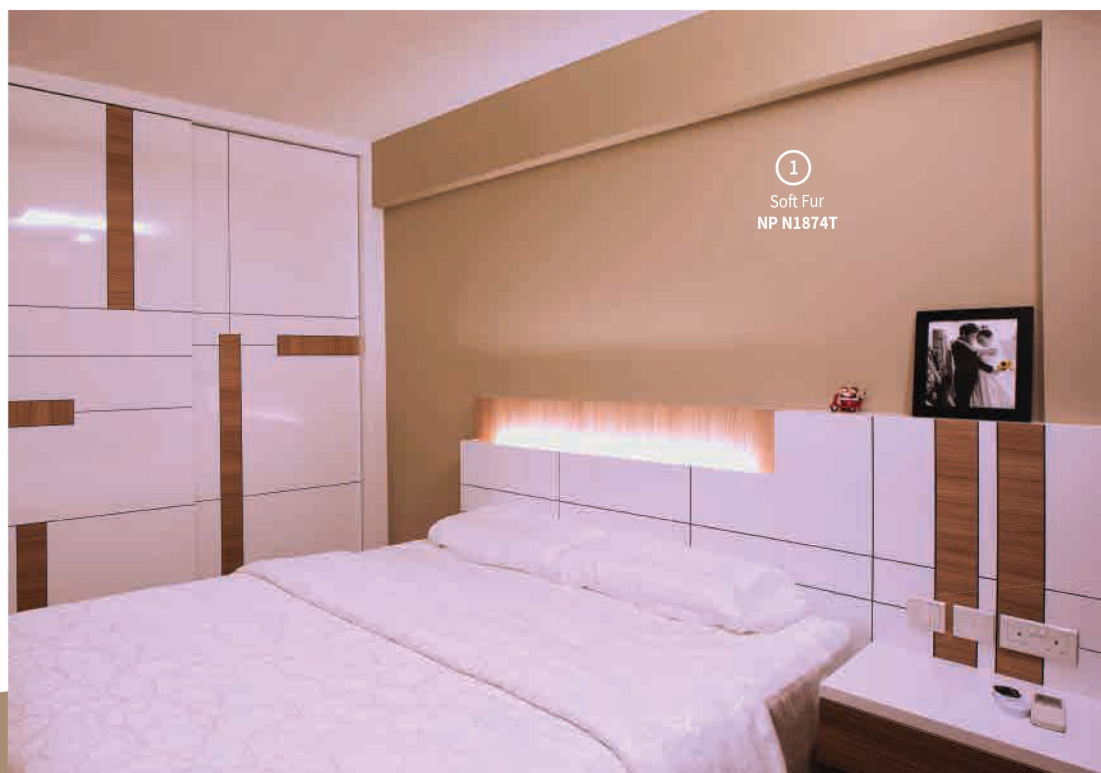


Image courtesy of Areana Creation Pte Ltd. Lighting of the room can influence the appearance of the final colour. Kindly refer to page 10 for the actual colour chip.



Download Nippon Paint Colour Visualizer App to test over a thousand colours of your own home images!

- All colours shown are as close to actual Nippon Paint colours as modern printing techniques permit.
- Colours shown in all images may vary from actual Nippon Paint colours due to lighting in photographs and printing.
- All colours shown are for reference only. Please always refer to the actual colour chips in pages 4 to 13 for your colour selection.



Warm browns make spaces feel cozier and peaceful. Darker brown can be used to evoke the feeling of warmth, comfort and security.



①  
Light McIntosh  
NP N1860P

Image courtesy of Starry Homestead Pte Ltd. Lighting of the room can influence the appearance of the final colour. Kindly refer to page 10 for the actual colour chip.



①  
Pebble Walk  
NP N1817P

Image courtesy of Y-Axis ID. Lighting of the room can influence the appearance of the final colour. Kindly refer to page 11 for the actual colour chip.



# Off WHITE

Simplicity, Innocent and Pure

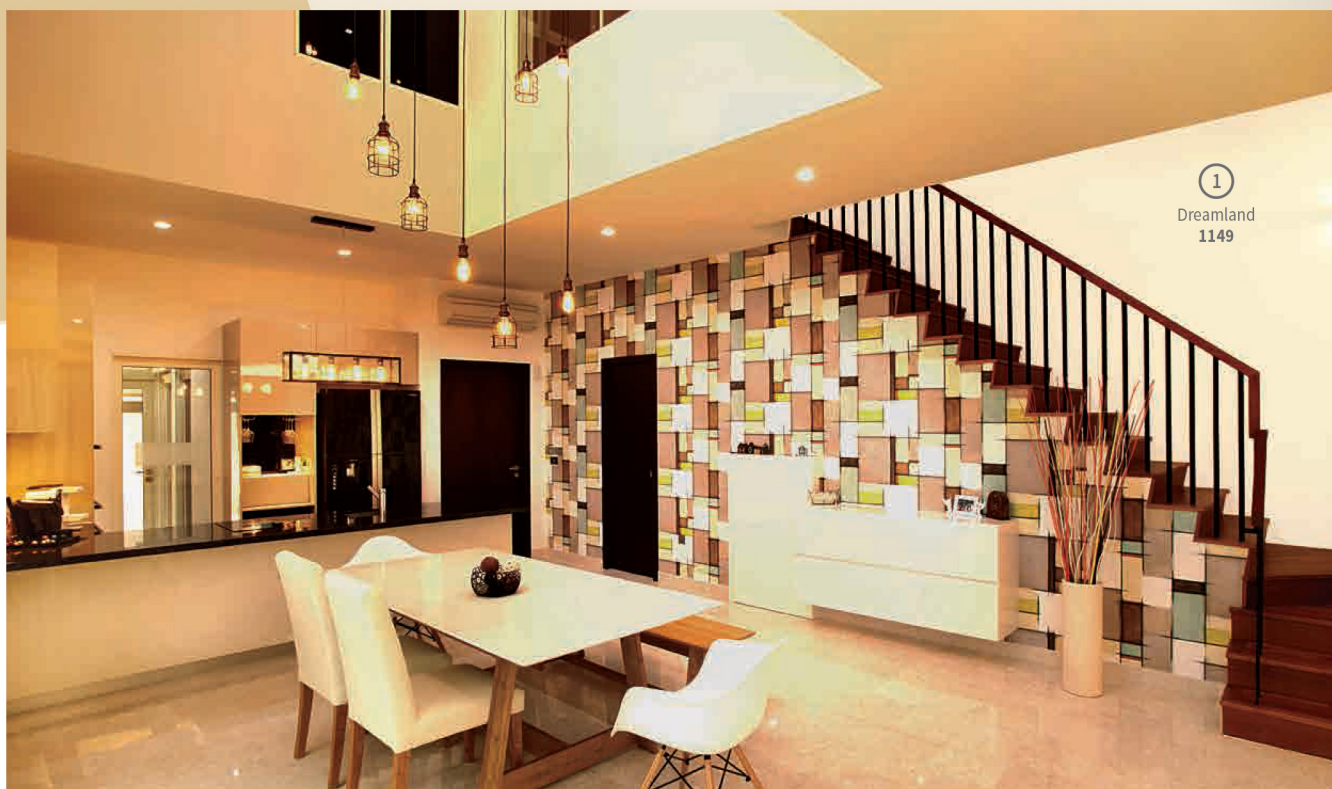


Image courtesy of Artrend Design. Lighting of the room can influence the appearance of the final colour. Kindly refer to page 4 for the actual colour chip.

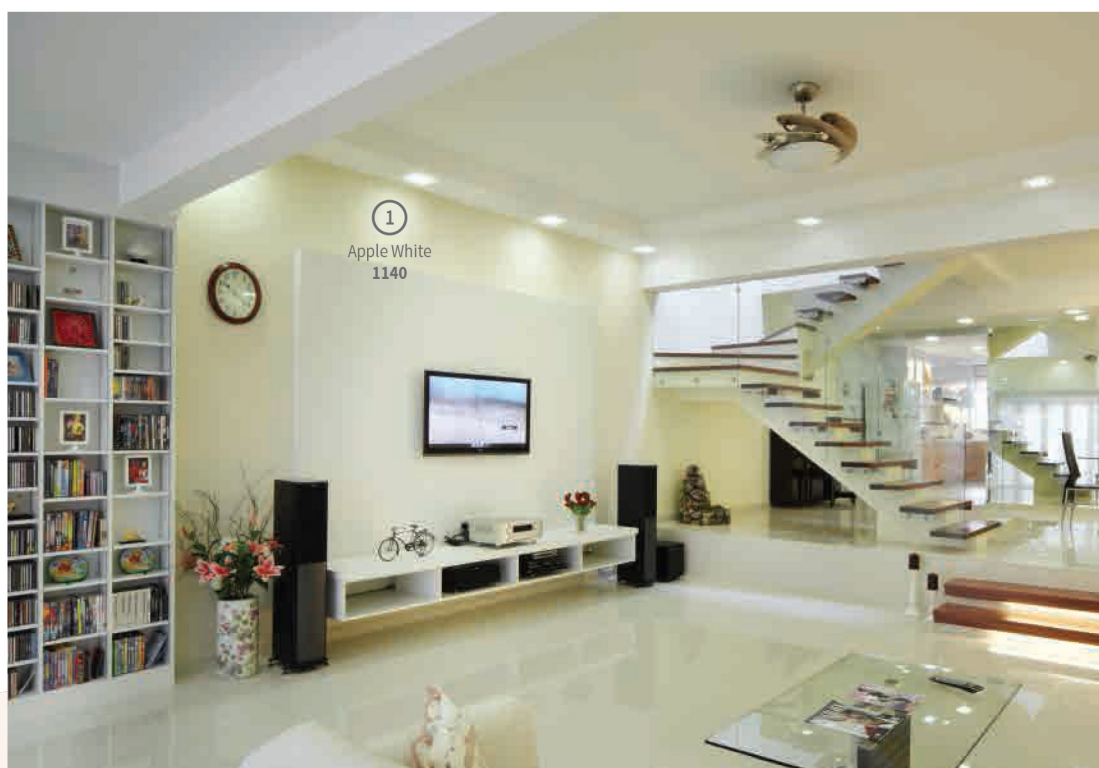


Image courtesy of Carpenters.com.sg. Lighting of the room can influence the appearance of the final colour. Kindly refer to page 4 for the actual colour chip.



Off whites such as Dreamland 1149 (refer to page 4) with a tint of yellow can warm up your room and give it a spacious look.

- All colours shown are as close to actual Nippon Paint colours as modern printing techniques permit.
- Colours shown in all images may vary from actual Nippon Paint colours due to lighting in photographs and printing.
- All colours shown are for reference only. Please always refer to the actual colour chips in pages 4 to 13 for your colour selection.



A high quality brush and roller can help save you time and achieve the results you are looking for, because it is able to hold more paint and spread it more evenly. Use only Nippon Paint painting tools!



Image courtesy of Love Home Interior Design Pte Ltd. Lighting of the room can influence the appearance of the final colour. Kindly refer to page 12 for the actual colour chip.



Image courtesy of Icon Interior Design. Lighting of the room can influence the appearance of the final colour. Kindly refer to page 12 for the actual colour chip.

cool

# GREY

Cool, Neutral and Sophisticated

- All colours shown are as close to actual Nippon Paint colours as modern printing techniques permit.
- Colours shown in all images may vary from actual Nippon Paint colours due to lighting in photographs and printing.
- All colours shown are for reference only. Please always refer to the actual colour chips in pages 4 to 13 for your colour selection.



# WOOD & METAL PAINT



## Bodelac 9000

High gloss enamel paint

- ✓ Protects against corrosion
- ✓ Resists fungus growth
- ✓ Exceptional durability
- ✓ Superior gloss retention



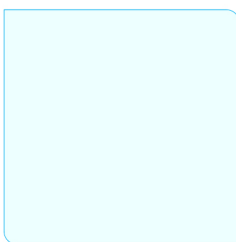
## Aqua Bodelac

Low odour water-based enamel paint

- ✓ Fast drying
- ✓ Exceptional durability
- ✓ Resists fungus growth
- ✓ Superior gloss retention



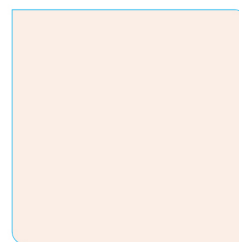
① Evening Haze #9005



① Sky Blue 9001



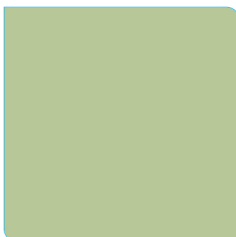
① Soft Fern 9074



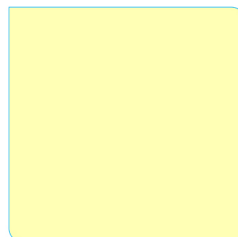
① Pink Cloud NP OW1037P



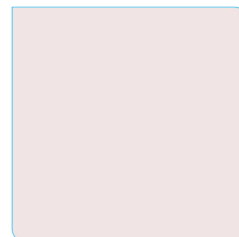
③ Legend Blue 9062



② Calm Green 9037



① Primrose 9017



① Flight 9019



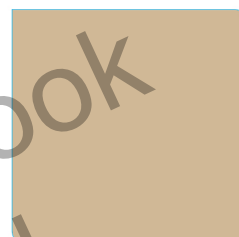
④ Blue Marines 9008



② Mirage 9075



④ Mayan Yellow 9063



① Light Apricot 9055



④ Bright Blue 9029



④ Crystal Mint #9007



④ Canary 9002



① Tangy Glow 9066



① Nice Mint NP BGG1598P



③ Absinthe 9039



④ Orange #9013



③ Tropical Punch 9056



② Mint Green 9050



④ Grass Green 9041



④ Fresh Orange 9053



④ International Orange 9014



④ Emerald 9048



④ Turf Green 9028



④ Autumn Brown 9046



Vermillion #9004

## Durable & Glossy ENAMEL PAINT







## Shades of WHITE

Also available in  
Gloss Black 9051  
and White 9052



Matt White 9067 and Matt Black 9045 are available for selection in Bodelac 9000.  
Both Matt colours are not available in Aqua Bodelac.

# EXTERIOR PAINT



## Weatherbond

Exceptionally weatherable paint

- ✓ Excellent resistance against dirt, chemicals and peeling
- ✓ Resists fungus and algae growth
- ✓ Anti-carbonation formula to protect against fading of colours



## Weatherbond AlgaeGuard

Exceptional resistance against algae and dirt streaks

- ✓ Anti-algae and dirt streaks protection
- ✓ Excellent resistance against dirt, chemicals and peeling
- ✓ Anti-carbonation formula to protect against fading of colours



## SolaReflect

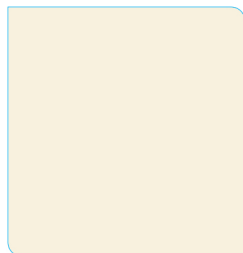
Exceptional heat reduction paint

- ✓ Excellent resistance against dirt, chemicals and peeling
- ✓ Excellent weatherability
- ✓ Resists algae and fungus growth

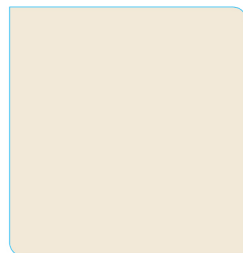
Also available in Black BS 00E53 and White BS 00E55.



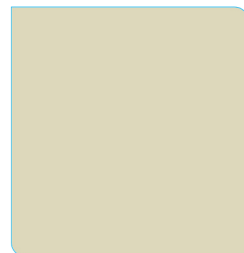
① Peach Frosting 0837



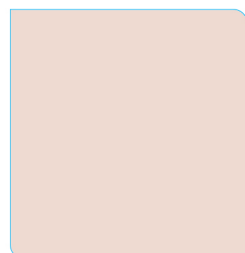
① September Cream 0838



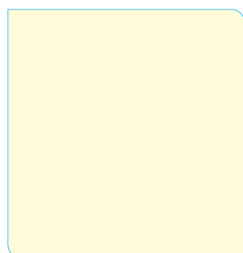
① Linen White BS 10B15



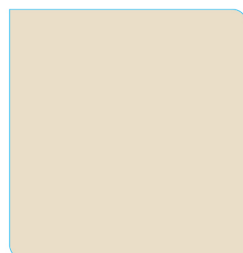
① Maryland 0836



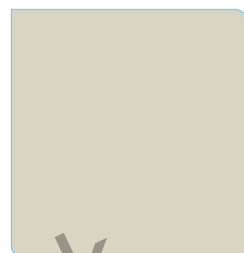
① Rose BS 04E49



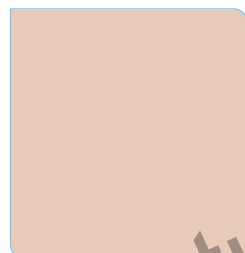
① Tropical Peach 0821



① Cameo White BS 08C31



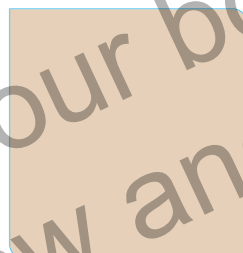
① Rustic Beige 0823



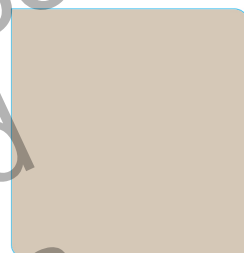
① Rouge Pink BS 04C33



③ Sunset 0807



① Shitake ■ NP N1873P



① Coffee Milk BS 08B17



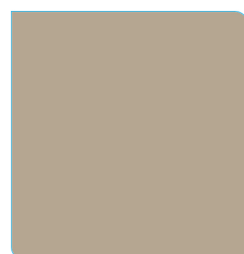
② Fading Rose 0842



③ Tangerine 0806



② Biscuit BS 06C33



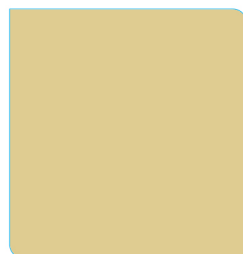
② Earth 0831



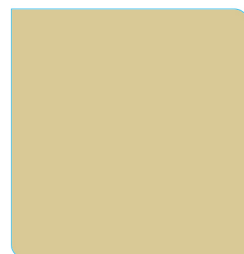
④ Bronze Copper 0830



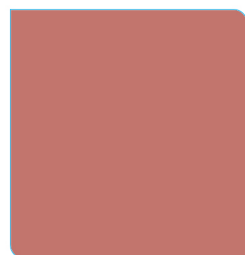
④ Amber 0818



③ Light Tangerine 0824



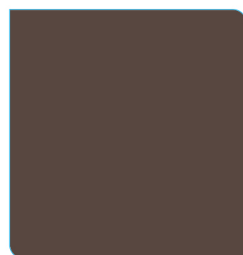
② Coffee Flavour 0822



④ Spanish Red 0803



④ Suburban 0835



④ Mahogany 0805



③ Bean Town 0834



■ These colours are not available for SolaReflect.

## INTERIOR WOOD VARNISH



### TIMBERLAC

Enhance natural wood grain

- ✓ Exceptional durability
- ✓ Excellent flow and levelling for a smooth finish
- ✓ Resists fungus growth
- ✓ Excellent adhesion
- ✓ Gloss finish

Types of Wood	Before Painting	After Painting					
	Natural Wood Colour	Clear NTG 01	Mahogany NTG 03	Golden Pine NTG 04	Rosewood NTG 05	Walnut NTG 06	Black NTG 07
Natural Ramin							
Natural Nyatoh							
Natural Teak							

## EXTERIOR WOOD VARNISH



### SOLARSHIELD

Protects wood against sun and rain

- ✓ Exceptional weatherability
- ✓ Excellent water repellency
- ✓ Resists mould growth
- ✓ Enhances natural wood grain
- ✓ High Gloss finish

Also available: Clear



Honeypine

SLS 01



Mahogany

SLS 02



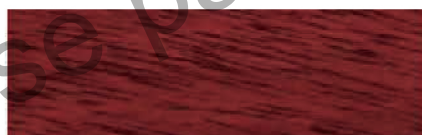
Rosewood

SLS 03



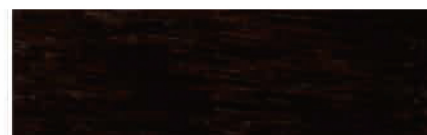
Antique Red

SLS 04



Walnut

SLS 05



Ebony

SLS 06

## EXTERIOR WOOD PAINT



### TIMBERCOAT

Exceptionally durable wood paint finish

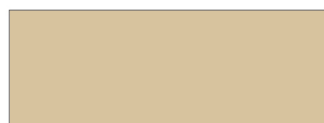
- ✓ Excellent durability
- ✓ Resists mould growth
- ✓ Low Sheen finish

Also available: White TBC 07, Black TBC 08.



Smoky Grey

TBC 01



Gingerbread

TBC 02



Tan Leather

TBC 03



Teak

TBC 04



Siberian Nite

TBC 05



Cigar

TBC 06



## EXTERIOR WOOD DECK VARNISH



### WOODGUARD

Enhance ultraviolet protection while retaining the natural wood grains

- ✓ Good UV and weather resistance
- ✓ Excellent water repellent property
- ✓ Good dirt and stain resistance
- ✓ Good resistance to fungus and mould
- ✓ Gloss finish



Original Wood Colour



Natural

WG 101



Honey Pine

WG 102



Red Maple

WG 103



Arcacia

WG 104



Sweet Cherry

WG 105



Golden Juniper

WG 106



Toasted Almond

WG 107



Sycamore Cone

WG 108



Aged Oak

WG 109



Olive Bay

WG 110



Cypress Grove

WG 111

## EXTERIOR WOOD DECK VARNISH



### AQUA WOODGUARD

Durable Water-Based Wood Coating

- ✓ Good UV and weather resistance
- ✓ Excellent water repellent property
- ✓ Good dirt and stain resistance
- ✓ Good resistance to fungus and mould



#### GLOSS



Natural

AWG 201



Toasted Almond

AWG 202



Natural

AWG 301



Toasted Almond

AWG 302



Sycamore Cone

AWG 203



Sycamore Cone

AWG 303

#### SOFT MATT

## ROOF PAINT



### ROOFGUARD

Exceptional protection against UV rays

- ✓ Exceptional weatherability
- ✓ Excellent alkaline resistance
- ✓ Effective mould control formula
- ✓ Mid-sheen finish



Marmalade

RFG 01



Coral

RFG 02



Ocean Emerald

RFG 03



Monochrome

RFG 04



Mayfair

RFG 05



Midnight Fuchsia

RFG 06



Sapphire Ink

RFG 07



Galaxy

RFG 08



# PAINT GUIDE

## STEP 01

Select the sealer to prepare the wall surface for better top coat adhesion.



1 coat of grey-coloured sealer is recommended prior to painting over accent colours  
Request from any authorised Nippon Paint retailers.

### SEALER - BASE COAT

	FOR INTERIOR				FOR EXTERIOR	
						
Product Name	ExpressKote Water-based sealer	Vinilex 5170 Oil-based sealer	5101 Odourless Water-based sealer	Momento Primer (For Momento only)	ExpressKote Water-based sealer	Vinilex 5170 Oil-based sealer
No of coat(s)	1 Coat	1 Coat	1 Coat	2 Coats	1 Coat	1 Coat
Drying time between coats	2 Hours	5 Hours	2 Hours	2 Hours	2 Hours	5 Hours
Area coverage (Per Litre)	11m <sup>2</sup>	16m <sup>2</sup>	10-12m <sup>2</sup>	10-12m <sup>2</sup>	11m <sup>2</sup>	16m <sup>2</sup>
Available in	1L, 5L	1L, 5L	1L, 5L	1L	1L, 5L	1L, 5L





## STEP 02

Select the top coat to paint over the prepped wall surface.










More than 2 coats of top coat may be required to achieve your desired shade of colour

### INTERIOR - TOP COAT ( AVAILABLE IN: 1L & 5L )

	FOR INTERIOR WALLS			
				
Product Name	<b>Odour-less All-In-1</b> Almost no paint odour during and after painting	<b>Odour-less EasyWash</b> Anti-stain formula 2x easier to clean	<b>Odour-less Medifresh</b> Anti-bacterial protection Virtually No Paint Odour	<b>MozzieGuard</b> Against Aedes Aegypti Mosquitoes
Features	<ul style="list-style-type: none"> <li>• Almost no odour</li> <li>• Near zero VOC</li> <li>• Ammonia-free</li> <li>• Heavy metal free</li> <li>• Classic matt finish</li> <li>• Long-lasting colours</li> <li>• Washable</li> <li>• Covers hairline cracks</li> <li>• Anti-bacterial</li> <li>• Resistance to fungus</li> <li>• Easy to apply</li> <li>• Easy to touch-up</li> </ul>	<ul style="list-style-type: none"> <li>• Less splattering</li> <li>• Excellent coverage and hiding power</li> <li>• Excellent flow and levelling</li> <li>• Resistance to fading and chalking</li> <li>• Water-based paint</li> <li>• No lead or mercury added (non-toxic)</li> </ul> <p>Added washability features:</p> <ul style="list-style-type: none"> <li>• Teflon® surface protector</li> <li>• Anti-stain formula = 2x easier to clean</li> </ul>	<ul style="list-style-type: none"> <li>• Almost no paint odour</li> <li>• Ultra low VOC</li> <li>• Durable &amp; washable film</li> <li>• Ammonia-free</li> <li>• Washable</li> <li>• Non-toxic and lead, mercury and heavy metals free</li> <li>• Fungus &amp; mould resistant</li> <li>• Anti-bacterial property reduce common bacteria (E.Coli, MRSA and Staphylococcus Aureus) effectively</li> <li>• Spatter resistance</li> <li>• Excellent flow</li> <li>• Excellent coverage</li> <li>• Classic matt finish</li> <li>• Long lasting colours</li> </ul>	<ul style="list-style-type: none"> <li>• Repels And Knocks Down Mosquitoes</li> <li>• DEET-Free Formulation</li> <li>• Low Odour</li> <li>• SGBP Certified Green Product</li> <li>• Registered With NEA</li> <li>• Soft Sheen Finish</li> </ul>
No. of coat(s)	2 Coats	2 Coats	2 Coats	2 Coats
Drying time between coats	2-4 Hours	2-4 Hours	2-4 Hours	2-4 Hours
Area coverage (Per Litre)	10-12m <sup>2</sup>	13m <sup>2</sup>	10-12m <sup>2</sup>	13m <sup>2</sup>

## INTERIOR - TOP COAT (AVAILABLE IN: 1L & 5L)

	FOR INTERIOR WALLS				FOR INTERIOR CEILING
					
	<b>Easy Wash with Teflon®</b> Premium washable paint	<b>3in1 Medifresh</b> Anti-bacterial protection	<b>Vinilex 5000</b> Most Economical Paint	<b>Vinyl Silk</b> Luxurious silky shades	<b>Odour-less Anti-Mould Ceiling White</b>
<b>Features</b>	<ul style="list-style-type: none"> <li>Teflon® Technology</li> <li>Outstanding washability</li> <li>Soft sheen finish</li> <li>Long-lasting colours</li> <li>Covers hairline cracks</li> <li>Excellent coverage</li> <li>Resistant to stain</li> <li>Alkali resistant</li> <li>Anti-fungus/mould</li> <li>Water-based paint</li> <li>Resistant to blistering and peeling</li> <li>Fast drying</li> <li>Easy to apply</li> <li>No lead or mercury added (non-toxic)</li> </ul>	<ul style="list-style-type: none"> <li>Anti-bacterial formula up to 5 years - useful for the inhibition of asthma, flu and diarrhoea</li> <li>Low sheen finish</li> <li>Long-lasting colours</li> <li>Covers hairline cracks</li> <li>Waterproof</li> <li>Outstanding washability</li> <li>Exceptional hiding power</li> <li>Excellent coverage</li> <li>Anti-fungus / mould / algae</li> <li>Resistant to blistering and peeling</li> <li>Fast drying</li> <li>Easy to apply</li> <li>Water-based paint</li> <li>No lead or mercury added (non-toxic)</li> </ul>	<ul style="list-style-type: none"> <li>Low odour</li> <li>Matt finish</li> <li>Long-lasting colours</li> <li>Good coverage</li> <li>Easy to apply</li> <li>Durable</li> <li>Resistant to alkali/fungus</li> <li>Water-based paint</li> <li>No lead or mercury added (non-toxic)</li> </ul>	<ul style="list-style-type: none"> <li>Satin sheen finish</li> <li>Long lasting colours</li> <li>Good hiding power</li> <li>Durable</li> <li>Anti-fungus</li> <li>Fast drying</li> <li>Easy to apply</li> <li>Water-based paint</li> <li>No lead or mercury added (non-toxic)</li> </ul>	<ul style="list-style-type: none"> <li>Special anti-mould formula</li> <li>Environmentally friendly</li> <li>Great at covering hairline cracks</li> <li>Easy to apply</li> <li>Easy to touch up</li> <li>Matt finish</li> <li>Water-based paint</li> </ul>
					
<b>No. of coat(s)</b>	2 Coats	2 Coats	2 Coats	2 Coats	2 Coats
<b>Drying time between coats</b>	2-4 Hours	2-4 Hours	2-4 Hours	2-4 Hours	2 Hours
<b>Area coverage (Per Litre)</b>	13m <sup>2</sup>	6m <sup>2</sup>	13m <sup>2</sup>	9m <sup>2</sup>	9-10m <sup>2</sup>

## EXTERIOR - TOP COAT (AVAILABLE IN: 5L & 20L)

	FOR EXTERIOR WALLS			FOR EXTERIOR ROOF TILES
				
	<b>Weatherbond AlgaeGuard</b> Exceptional resistance against algae and dirt streaks	<b>Weatherbond</b> Exceptionally weatherable paint	<b>SolaReflect</b> Exceptional heat reduction paint	<b>RoofGuard</b> Exceptional protection against UV rays
<b>Features</b>	<ul style="list-style-type: none"> <li>Outstanding resistance to fungal and algae growth</li> <li>Enhanced anti-streak marks property keeping the facade clean</li> <li>Excellent weather durability under local climatic conditions</li> <li>Good adhesion on stable surfaces</li> <li>Easy to apply with good levelling property</li> <li>Excellent anti-carbonation property</li> <li>High water vapour permeability</li> <li>Low sheen finish</li> </ul>	<ul style="list-style-type: none"> <li>High performance paint for exterior walls</li> <li>Excellent resistance to dirt, water, alkali, chemicals and peeling</li> <li>Anti-fungus and algae</li> <li>Anti-carbonation formula</li> <li>Excellent adhesion to wall surface</li> <li>Tough and durable protective coating against effects of weather</li> <li>Water-based paint</li> <li>No lead or mercury added (non-toxic)</li> <li>Low sheen finish</li> </ul>	<ul style="list-style-type: none"> <li>Reduce surface temperature</li> <li>Excellent weather resistance</li> <li>Heat reduction effect - energy saving</li> <li>Anti-fungus &amp; anti-algae</li> <li>Long-lasting colours</li> <li>Low VOC</li> <li>Low sheen finish</li> </ul>	<ul style="list-style-type: none"> <li>Excellent light-fast alkali resistant pigments</li> <li>Effective mould control additive</li> <li>Mid sheen finish</li> </ul>
				
<b>No. of coat(s)</b>	2 Coats	2 Coats	2 Coats	2 Coats
<b>Drying time between coats</b>	2 Hours	2 Hours	2 Hours	2-3 Hours
<b>Area coverage (Per Litre)</b>	9m <sup>2</sup>	9m <sup>2</sup>	10-12m <sup>2</sup>	12m <sup>2</sup> only available in 5L

## STEP 01

Select the sealer to prepare the wall surface for better top coat adhesion.



1 coat of grey-coloured sealer is recommended prior to painting over accent colours  
Request from any authorised Nippon Paint retailers.

### SEALER - BASE COAT

#### FOR WOOD & METAL

		
Product Name	<b>Aqua Primer Sealer Undercoat</b> Water-based sealer	<b>Bodelac 9000 Undercoat</b> Oil-based sealer
No of coat(s)	1 Coat	1 Coat
Drying time between coats	2 Hours	18 Hours
Area coverage (Per Litre)	13m <sup>2</sup>	18m <sup>2</sup>
Available in	1L, 5L	1L, 5L

## STEP 02

Select the top coat to paint over the prepped wall surface.



More than 2 coats of top coat may be required to achieve your desired shade of colour

### WOOD AND METAL - TOP COAT (AVAILABLE IN: 1L & 5L)

#### FOR WOOD & METAL

 <b>SEALER IS RECOMMENDED</b>		
	<b>Bodelac 9000</b> High gloss enamel paint	<b>Aqua Bodelac</b> Low odour water-based enamel paint
Features	<ul style="list-style-type: none"> <li>• Super gloss and matt finishes for wood and metal surfaces</li> <li>• Good hiding power</li> <li>• Anti-fungus</li> <li>• Protects against corrosion</li> <li>• Excellent adhesion to wood and metal surfaces</li> <li>• Long-lasting colours</li> <li>• Easy to apply</li> <li>• Durable</li> <li>• No lead or mercury added (non-toxic)</li> </ul>	<ul style="list-style-type: none"> <li>• High gloss finishes for wood and metal surfaces</li> <li>• Anti-fungus</li> <li>• Protects against corrosion</li> <li>• Excellent adhesion to wood and metal surfaces</li> <li>• Long-lasting colours</li> <li>• Easy to apply</li> <li>• Durable</li> <li>• Eco-friendly</li> <li>• Water-based</li> </ul>
		 
No. of coat(s)	2 Coats	2 Coats
Drying time between coats	18 Hours	3 Hours
Area coverage (Per Litre)	17m <sup>2</sup>	15-17m <sup>2</sup>

### WOOD - TOP COAT (AVAILABLE IN: 1L & 5L)

#### FOR WOOD ONLY

				
<b>Timberlac</b> Interior Varnish Enhance natural wood grain	<b>Solarshield</b> Exterior Varnish Protects wood against sun and rain	<b>Timbercoat</b> Exterior Paint Exceptionally durable wood paint finish	<b>WoodGuard DECK</b> Excellent UV and weather resistance	<b>Aqua WoodGuard DECK</b> Good UV and weather resistance
<ul style="list-style-type: none"> <li>• Clear &amp; tinted wood varnish enhances wood surfaces</li> <li>• Available in various tints in gloss finish</li> <li>• Anti-fungus</li> <li>• Excellent resistance to scratches</li> <li>• Easy to apply</li> <li>• Durable</li> <li>• No lead or mercury added (non-toxic)</li> <li>• Excellent flow &amp; levelling for a smoother finish</li> </ul>	<ul style="list-style-type: none"> <li>• Excellent abrasion resistance</li> <li>• Long-lasting protection</li> <li>• Filters out UV rays</li> <li>• Water resistant</li> <li>• High Gloss Finish</li> </ul>	<ul style="list-style-type: none"> <li>• Contains light-fast pigments</li> <li>• Effective mould control additive</li> <li>• Excellent durability</li> <li>• Good adhesion</li> <li>• Low Sheen Finish</li> </ul>	<ul style="list-style-type: none"> <li>• Excellent water repellency</li> <li>• Excellent dirt resistance</li> <li>• Flexible finish</li> <li>• Desirable scratch hardness</li> <li>• Excellent flow and levelling</li> <li>• Good resistance to fungus and mould</li> <li>• Easy to apply</li> <li>• Gloss Finish</li> </ul>	<ul style="list-style-type: none"> <li>• Excellent water repellent property</li> <li>• Good dirt resistance</li> <li>• Good stain resistance</li> <li>• Good resistance to fungus and mould</li> <li>• Good flow and levelling</li> <li>• Water-based</li> <li>• Easy to apply and clean</li> <li>• Non-toxic, does not contain heavy metal</li> <li>• Gloss &amp; Soft Matt Finish</li> </ul>
   	 	  	  	  
2-3 Coats	2 Coats	2 Coats	2-3 Coats	2-3 Coats
3 Hours	4 Hours	2-4 Hours	4 Hours	3 Hours
13m <sup>2</sup>	20m <sup>2</sup>	10-12m <sup>2</sup>	10-15m <sup>2</sup>	13m <sup>2</sup>



## SPECIAL EFFECTS PAINT ( AVAILABLE IN: 1L )

FOR INTERIOR

Product Name	 Momento Special Effects Paint
Features	<ul style="list-style-type: none"> <li>• Low odour and low VOC</li> <li>• Non-toxic solvent</li> <li>• Available in more than 300 colours over Sparkle Pearl, Sparkle Silver, Sparkle Gold, Elegant and Designer Series</li> </ul>
No. of coat(s)	1 Coat
Drying time between coats	2 Hours
Area coverage (Per Litre)	4-6m <sup>2</sup>



## SPRAY PAINT ( AVAILABLE IN: 400CC )

FOR INTERIOR & EXTERIOR

Product Name	 Pylox Spray Paint Convenient spray paint with 85 colours for decorative and protective purposes
Features	<ul style="list-style-type: none"> <li>• Also available in heat resistance (black and silver) formula</li> <li>• Gloss finish comes in a wide selection of colours, including metallic, silver and gold colours</li> <li>• Can be used on metal, wood and paper surfaces</li> <li>• Non-toxic</li> <li>• Excellent gloss and colour retention</li> <li>• Quick and easy application</li> <li>• Protects and beautifies</li> <li>• Superior quality</li> <li>• Quick drying</li> <li>• Washable</li> <li>• Ozone-friendly (CFC free)</li> </ul>
No. of coat(s)	3 Coats
Drying time between coats	1 Hour
Area coverage (400CC)	Wood (0.6-1.0m <sup>2</sup> ), Metal (0.8-1.6m <sup>2</sup> )

Please visit:  
nipponpaint.com.sg/  
advice/diy-painting-  
tips-videos/how-to-use-  
nippon-paint-pylox



## PAINT VOLUME ESTIMATOR

### HOW MUCH PAINT DO YOU NEED?

Type of Home	All Ceilings	All Bedrooms	Dining/Living Room	Total
HDB 3-Room	3 cans x 5L	2 cans x 5L	1 can x 5L	6 cans
HDB 4-Room	3 cans x 5L	3 cans x 5L	2 cans x 5L	8 cans
HDB 5-Room	4 cans x 5L	3 cans x 5L	2 cans x 5L	9 cans
Condo/Exec. Apt	4 cans x 5L	3 cans x 5L	4 cans x 5L	11 cans
Landed Property	Wall Coverage: 1L covers approx 8m <sup>2</sup> (26.24 square feet) coat			

## PAINT VOLUME CALCULATION

Surface area to be painted (Height x Length)

Surface coverage per litre per coat in metres

= Total paint volume required per coat in litres

Eg. Painting Bedroom with Odour~less All-in-1

$$\left( \frac{2.5\text{m} \times 10\text{m}}{10\text{m}^2} \right)$$

Litres x 2 Coats = 2.5 Litres x 2 Coats = 5 Litres



# ORIGINAL PAINTING TOOLS

Perfect your painting work



Introducing Nippon Paint's superior range of professional painting tools to complete your painting work. Time-tested and quality assured, our comprehensive selection of painting accessories is the best choice for your perfect paint job.

Paint Brushes



Masking Tapes



Paint Stirrer



6" & 7" Paint Roller Sleeves



Plastic Drop Cloth



Waterproof Sandpaper



4" Paint Roller Sleeves



Paint Tray



Scrapers





# PREPARATION SEQUENCE

## PREPARING THE GROUNDWORK



STEP 1

Clear out the room totally.



STEP 2

Clean up the area.



STEP 3

Cover all exposed surfaces with Nippon Paint Plastic Drop Cloth.



STEP 4

Paste the sockets and switches with Nippon Paint Masking Tape.



STEP 5

Use Nippon Paint Plastic Drop Cloth and Masking Tape to protect window frames and woodwork.



STEP 6

Cover and tape floor skirting with Nippon Paint Plastic Drop Cloth.

## MENDING THE WALL with 5101 Odour-less Water-based Sealer or Vinilex 5170 Oil-based Sealer



STEP 1

Scrape off loose paint with a scraper and sand down for a smooth finish. Dust off.



STEP 2

Remove popped nails and fill up the dimples with filler.



STEP 3

Patch up cracks or uneven surfaces with the appropriate filler.



STEP 4

Use fine grit sandpaper to sand down rough spots.



STEP 5

Clean surfaces to be painted. All surfaces must be dried thoroughly before painting.



STEP 6

Before painting, use a wall sealer (5101 Odour-less sealer or Vinilex 5170 sealer) to neutralise the alkali on the walls.



## SEQUENCE OF PAINTING



1

A: Always start with the ceiling  
B: Followed by the cornices  
C: Then the walls  
D: And the woodwork around doors and windows  
E: Subsequently the doors  
F: Lastly the skirtings  
This prevents the other painted areas from being ruined while painting

3



A wide brush or roller may be used to paint the walls, though the latter gives the best finish and is quicker. Do apply the paint from the top right hand corner of the first wall using overlapping strokes, in an up-down manner when moving from area to area.

2



Use a brush and dip only one third of the brush bristles into the paint. Use long continuous strokes to form a neat line while painting difficult areas like the edges and corners first.

4

Always apply more than one coat of paint. Let the first coat dry before painting another coat over. An indication is found on the can for the first coat's drying time.

5

Upon completion, do wash all painting tools. Use water for emulsion paint and turpentine for oil-based paint.





# Professional PAINTING SERVICE

## THE *Trusted* PAINTING SERVICE, BY PROFESSIONALS

Thinking of giving your home a no-fuss new look? Our courteous and competent team has the right skills and tools to ensure the best home interior and exterior painting results. Trust Nippon Paint Professional Painting Service to complete your painting with a piece of mind.

### SEVEN REASONS TO ENGAGE US!



- Suitable Colour Schemes
- Wall Moisture
- Professional Advice
- Project Coordination
- Costing

**01/** FREE Pre-Painting Site Inspection



**02/** Genuine Premium Nippon Paint Products MADE IN SINGAPORE



SNAP, PREVIEW AND SELECT

**03/** FREE Digital Colour Preview Service worth \$100



**04/** Shifting and Protection of Furniture and Floor



**05/** Certified and Highly-Trained Painting Professionals



**06/** Cleaning and Reinstating of Furniture after Painting



**07/** 1 Year Interior Paint Warranty

Experience a Hassle-Free Painting Work!

CALL US FOR A NON-OBLIGATORY QUOTE NOW!

FOR PROFESSIONAL PAINTING,  
CALL OUR HOTLINE

# 6319 7222

MON TO SUN, 8AM - 5PM







# NIPPON PAINT

Say **GOODBYE**  
to **MOSQUITOES**

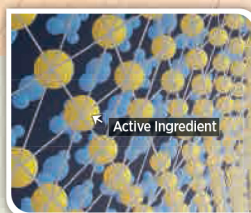


**New!**



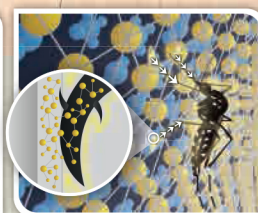
**Nippon Paint MozzieGuard** – a revolutionary paint technology that knocks down mosquitoes upon contact. It is effective against Aedes mosquitoes and registered with NEA.

Available at selected authorized dealer shops.  
Visit [www.nipponpaint.com.sg](http://www.nipponpaint.com.sg) to find out more.



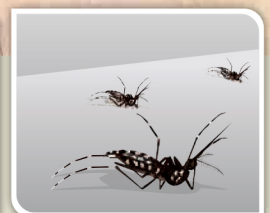
**01**

The wall is painted with Nippon Paint MozzieGuard with special active ingredient



**02**

Mosquito lands on the wall. The active ingredient enters the mosquito's nervous system



**03**

Mosquito is knocked down

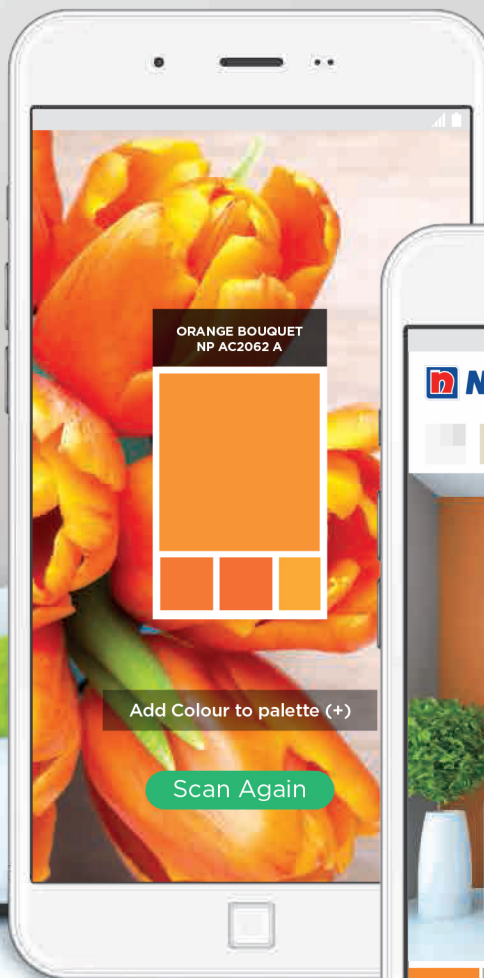


# NIPPON PAINT

## Visualize Your Colour Before Painting



NIPPON PAINT  
**Colour  
Visualizer**



Introducing the new 'Nippon Paint Colour Visualizer' app - your virtual painter that helps to make your painting job easier. Select, paint and visualize the colours on your home pictures "on-the-go"! Know what you're getting into before the first drop of paint touches your walls.

**New  
Feature:**

### COLOUR PICKER

- Scan your favourite colours using Colour Picker
- Visualise the colour on the app before painting

**DOWNLOAD TODAY!**



Download or visit [www.nipponpaint.com.sg](http://www.nipponpaint.com.sg)